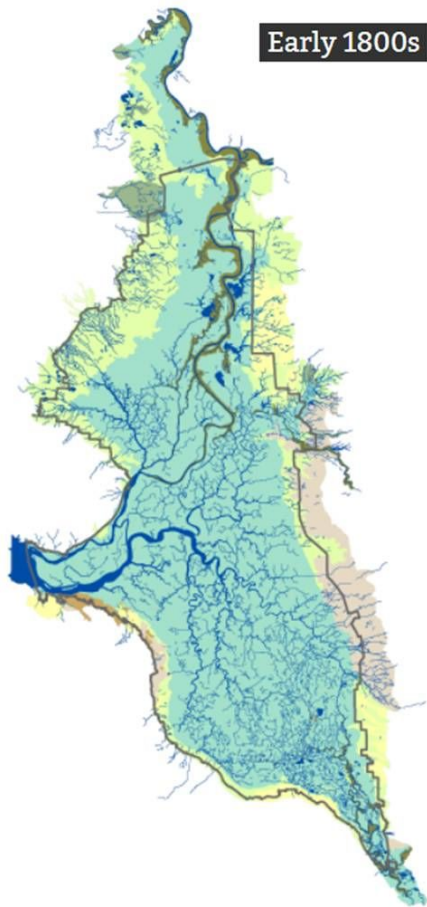


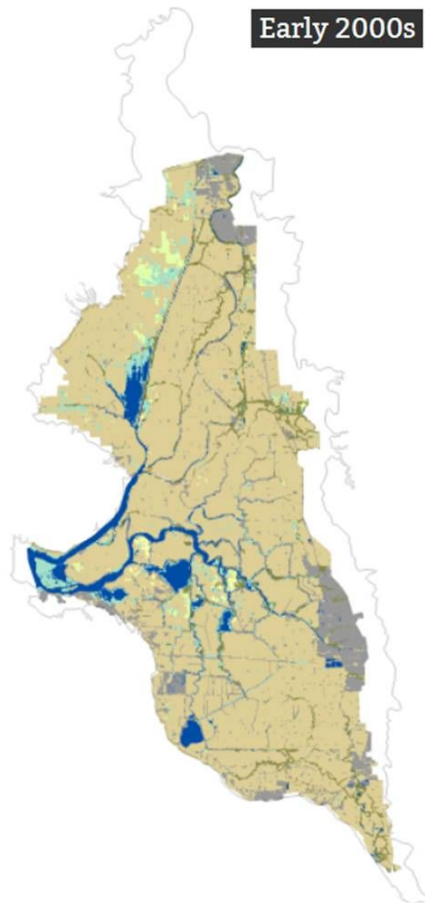
Biodiversity and Native Species



Early 1800s

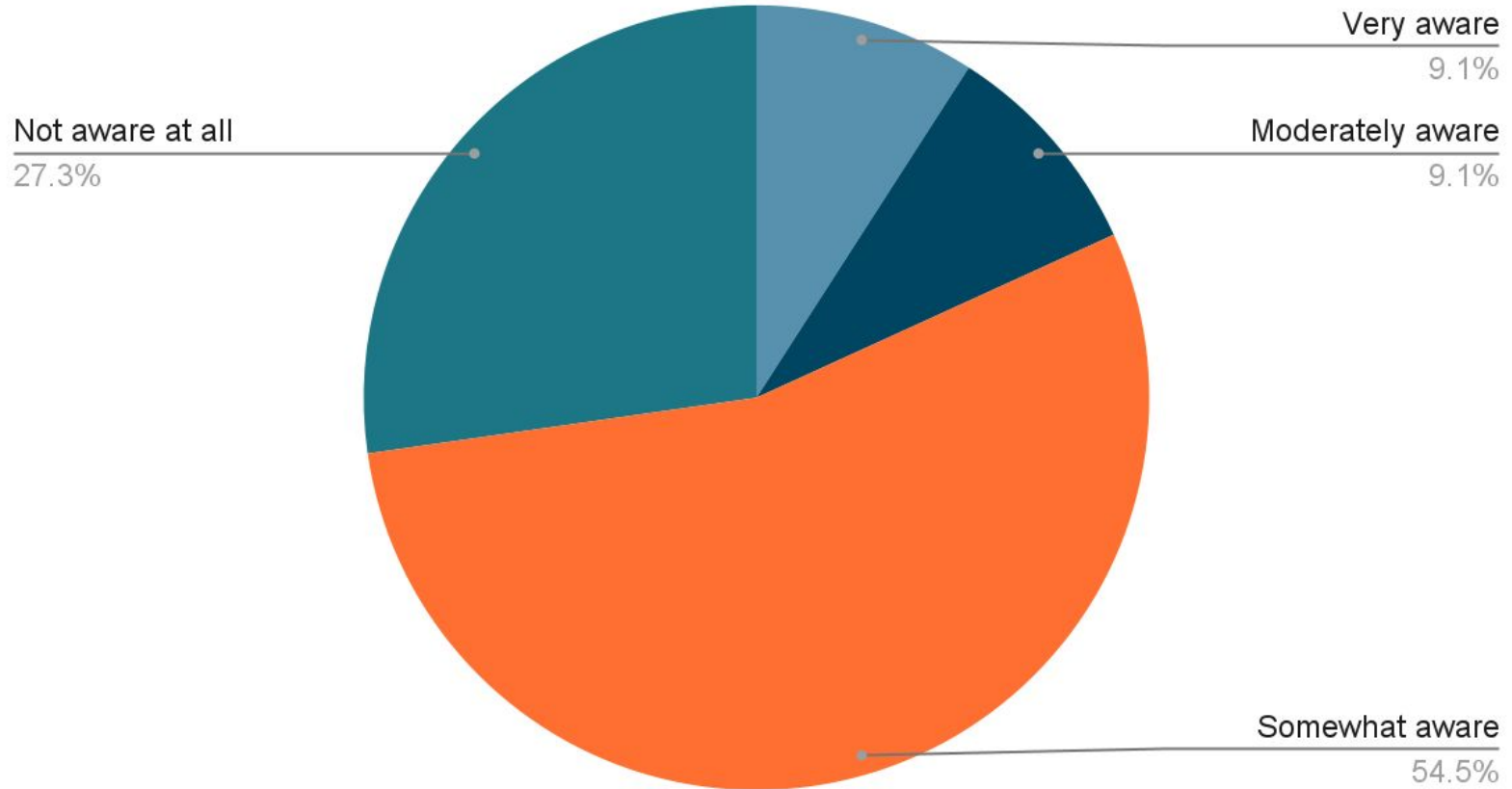


Early 2000s



- Agriculture
- Urban
- Water
- Freshwater Wetland
- Willow Thicket
- Riparian Forest
- Seasonal Wetland
- Dune Scrub
- Grassland
- Oak Woodland

Awareness of native versus invasive plant species





Native plants





Invasive species



